

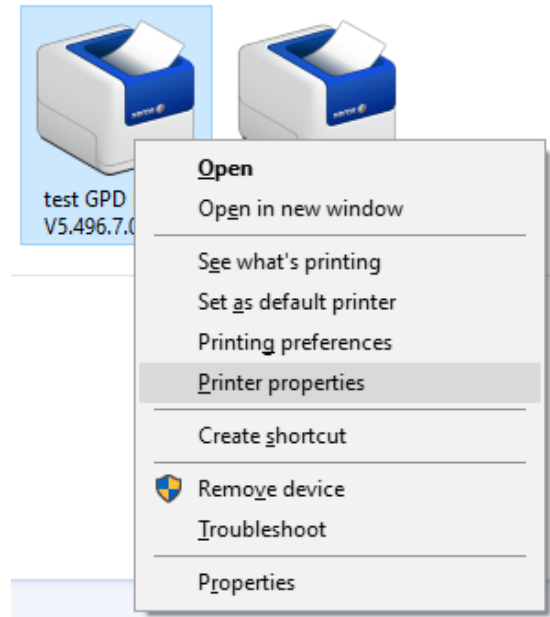
Xerox Print Driver Best Practice Settings

The directions are for both print server and direct IP printing configuration.

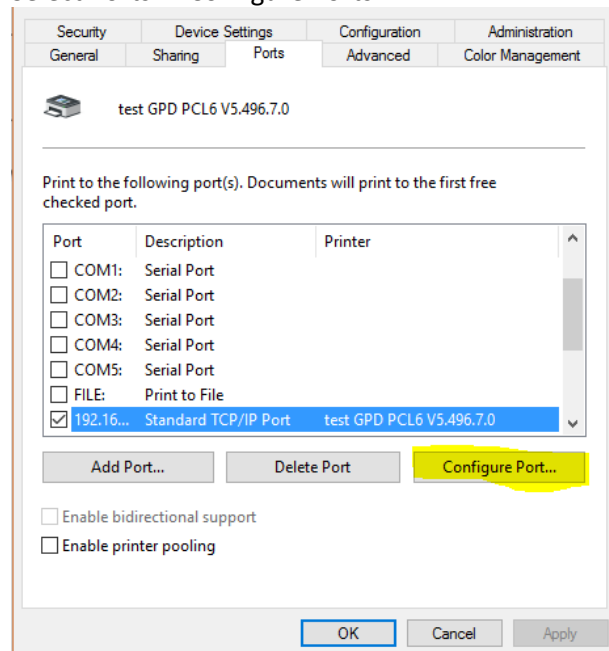
Print Driver installed on a Print Server

TCP/IP Port – this setting prevents the print queue from indicating an Off Line status even though the printer is available.

Right click on the printer ->printer properties



Select Ports -> Configure Ports



Disable SNMP Status

Configure Standard TCP/IP Port Monitor

Port Settings

Port Name: 192.168.1.0

Printer Name or IP Address: 192.168.1.0

Protocol

Raw LPR

Raw Settings

Port Number: 9100

LPR Settings

Queue Name:

LPR Byte Counting Enabled

SNMP Status Enabled

Community Name: public

SNMP Device Index: 1

OK Cancel

Select OK

Bi-Directional Communication – this setting reduces the delay users are experiencing when selecting properties of the print driver.

Select Configuration tab -> select Manual for the connection type.

General Sharing Ports Advanced Color Management

Security Device Settings Configuration Administration

Configuration Settings

Bi-Directional Communication

Connection: **Manual**

Device Name or TCP/IP Address: 13.226.177.90

SNMP Community Name...

Refresh Rate: 30 Seconds

Installable Options

Paper Trays: 5 Trays

Finisher: High Volume Finisher with Booklet Maker

Hole Punch Module: Installed

Insertion Module: Not Installed

Tri-Fold Module: Not Installed

LAN Fax Module: Installed

Job Storage Module: Installed

Accounting

System: None

Print-Time Prompt: Always Prompt

Mask User ID: Enabled

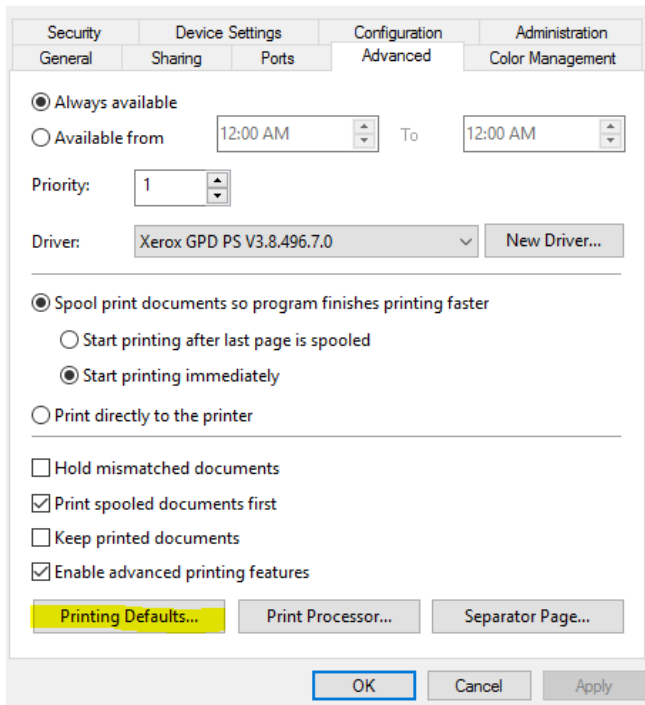
Mask Account ID: Enabled

Remember Last Entered Codes: Enabled

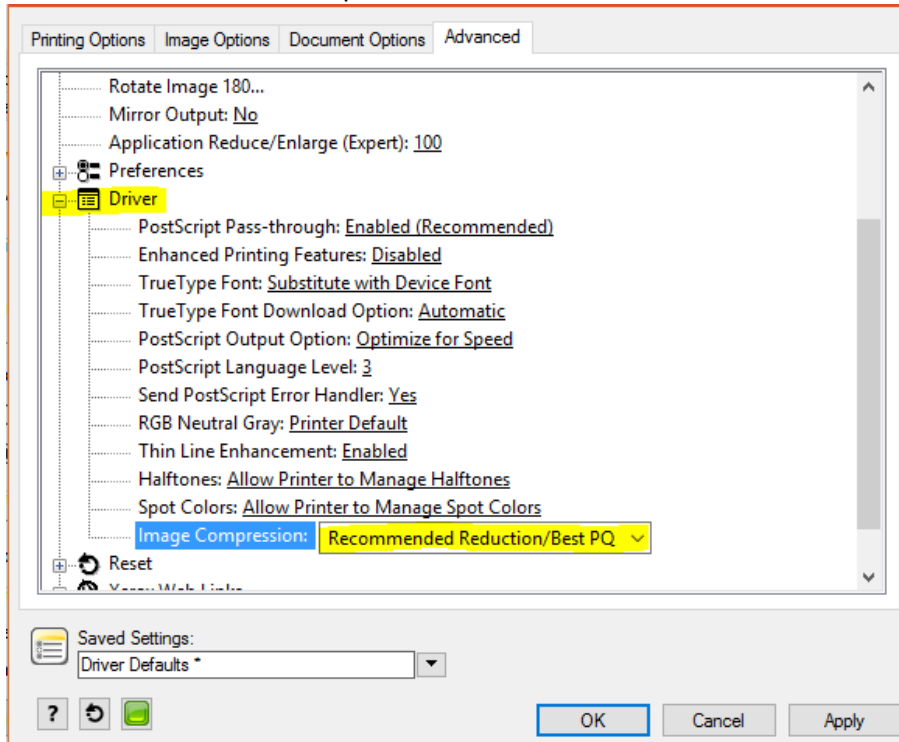
Accounting Codes...

Image Compression – this setting significantly decrease the file size of the print job spooling in the print queue and reduce the time processing on the MFD.

Select Advanced -> Printing Defaults



Select the Advance tab -> expand the Driver tree -> select Recommended Reduction/Best PQ

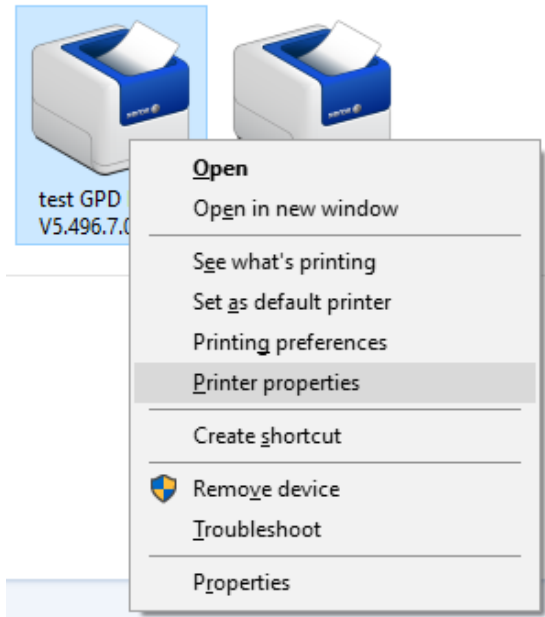


Apply and close the driver

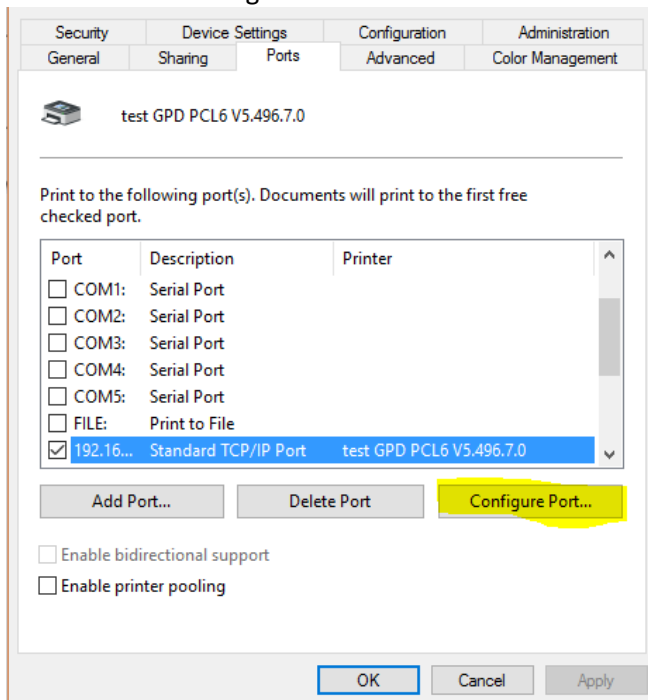
Print Driver installed on a Workstation (direct IP printing)

TCP/IP Port - this setting prevents the print queue from indicating an Off Line status even though the printer is available.

Right click on the printer ->printer properties



Select Ports -> Configure Ports



Disable SNMP Status

Configure Standard TCP/IP Port Monitor

Port Settings

Port Name: 192.168.1.0

Printer Name or IP Address: 192.168.1.0

Protocol

Raw LPR

Raw Settings

Port Number: 9100

LPR Settings

Queue Name:

LPR Byte Counting Enabled

SNMP Status Enabled

Community Name: public

SNMP Device Index: 1

OK Cancel

Select OK

Bi-Directional Communication– this setting reduces the delay users are experiencing when selecting properties of the print driver.

Select Configuration tab -> select Manual for the connection type.

General Sharing Ports Advanced Color Management

Security Device Settings Configuration Administration

Configuration Settings

Bi-Directional Communication

Connection: Manual

Device Name or TCP/IP Address: 13.226.177.90

SNMP Community Name...

Refresh Rate: 30 Seconds

Installable Options

Paper Trays: 5 Trays

Finisher: High Volume Finisher with Booklet Maker

Hole Punch Module: Installed

Inserter Module: Not Installed

Tri-Fold Module: Not Installed

LAN Fax Module: Installed

Job Storage Module: Installed

Accounting

System: None

Print-Time Prompt: Always Prompt

Mask User ID: Enabled

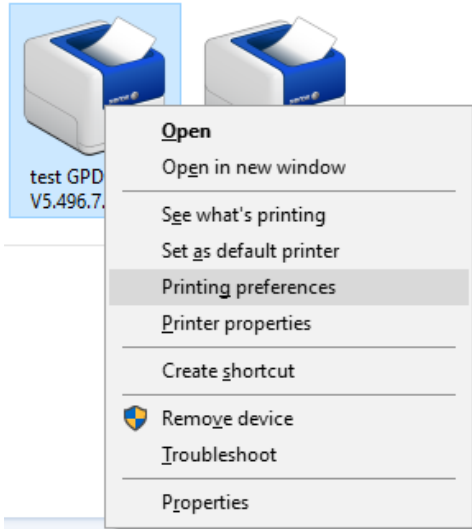
Mask Account ID: Enabled

Remember Last Entered Codes: Enabled

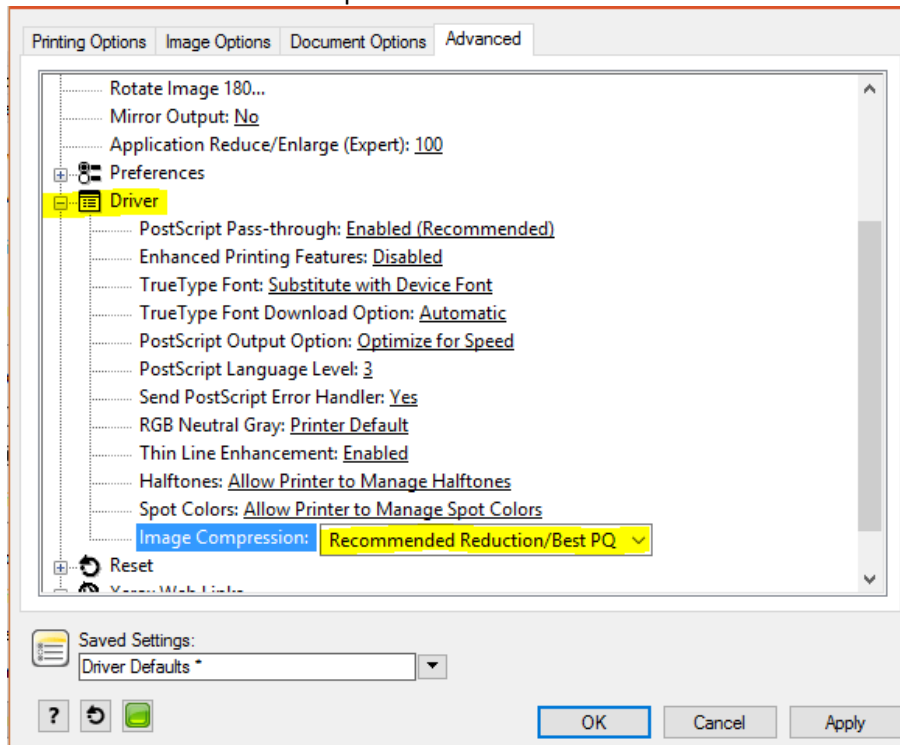
Accounting Codes...

Image Compression– this setting significantly decrease the file size of the print job spooling in the print queue and reduce the time processing on the MFD.

Right click on the installed printer -> Printing preferences



Select the Advance tab -> expand the Driver tree -> select Recommended Reduction/Best PQ



Apply and close the driver.